



How to Start the Run Cycle

Instructions for starting the run cycle on Wexxar case formers.

Written By: Wexxar WISE Admin

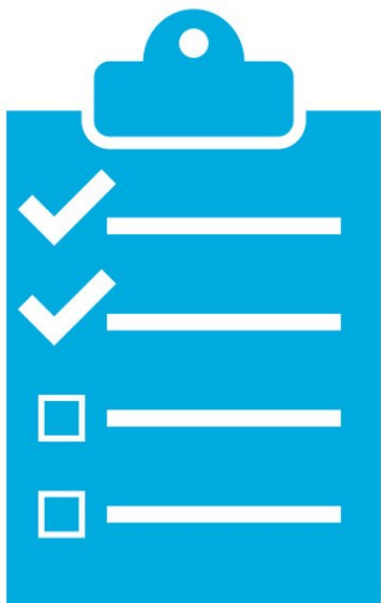


INTRODUCTION

Applies to:

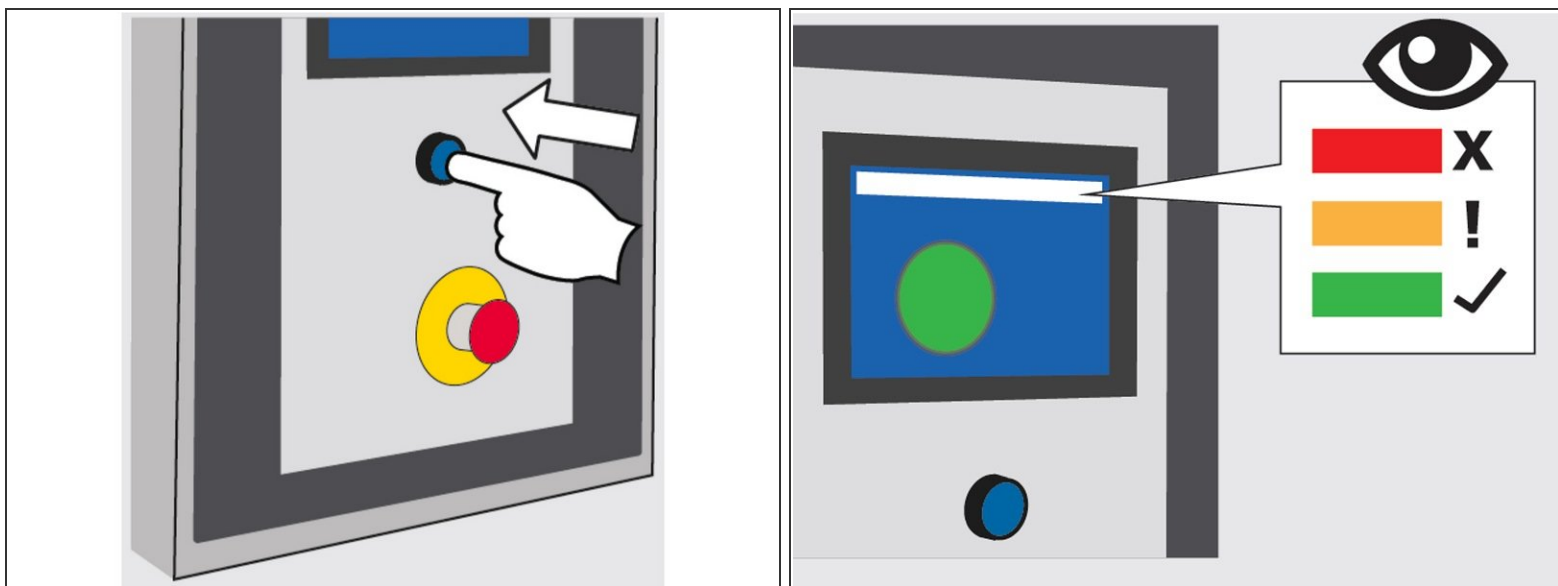
- WF-series
- BEL 290
- DEKKA 500

Step 1 — Preliminary Checks



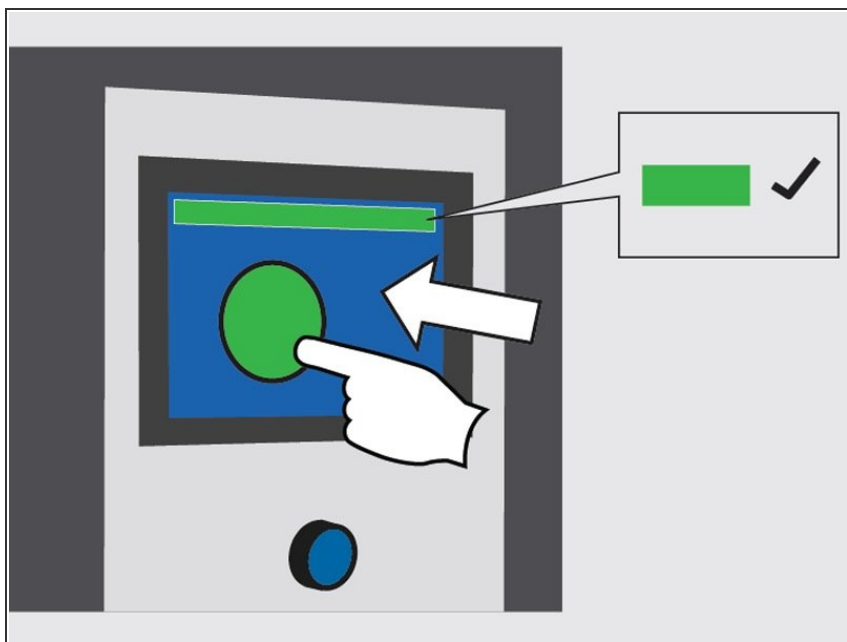
- ✦ Before starting:
- Load the magazine with the correct case size.
 - Push the first case into the caliper.
 - Load tape on the tape head - **OR-** load the hot melt tank and bring it to operating temperature (**350 °F**)
 - Close all guard doors.
 - Turn on the electrical power and the air. (Air pressure should be at 90 PSI.)
 - Release any **E-STOPS** that were pushed in.
 - On the HMI, navigate to the **Main Control** screen.

Step 2 — Reset the Case Former



- On the **Control Panel**, press **Reset**.
- Look at the status bar on the HMI screen:
 - **RED**: There is a condition that you must clear before the former can start.
 - **YELLOW**: There is a warning condition present. This won't prevent the former from starting, but you should remedy the condition before proceeding.
 - **GREEN**: All clear. Ready to start.

Step 3 — Start the Case Former



- On the **Main Control** screen, touch **Start**. The case former will continue to run until stopped or it encounters an error.
- To stop the case former, on the Main Control screen, touch **Stop** - OR- press an **E-STOP** button.

Thank you for contacting us. For us to better assist you, please reach out to our technical support by phone at 1.888.565.3219 or 604.930.9300 or by email at Wexxar.Service@promachbuilt.com or Wexxar.Parts@promachbuilt.com along with your machine model and serial number. One of our tech support reps will be glad to answer any questions you may have.