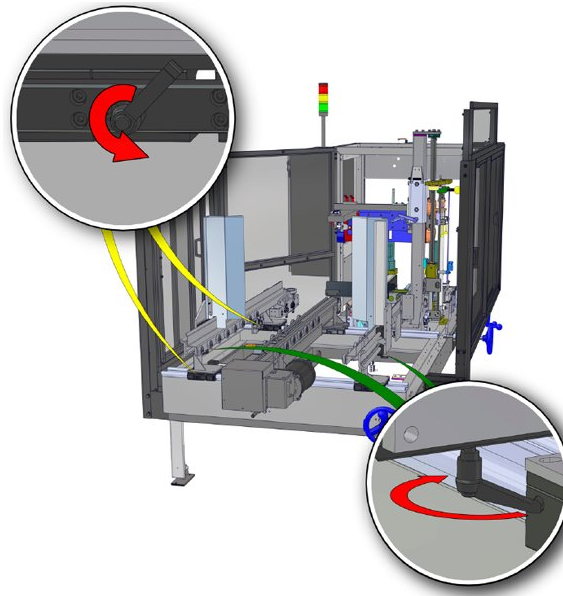




# Completing a Size Change

Adjust the case former to accommodate a new tray size.

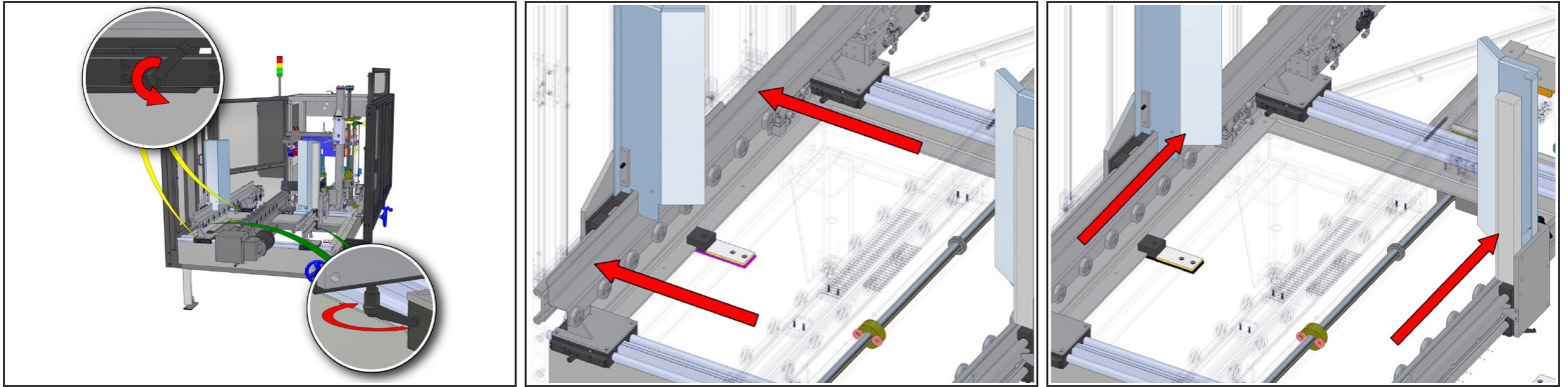
Written By: Aaron Krieger



## TOOLS:

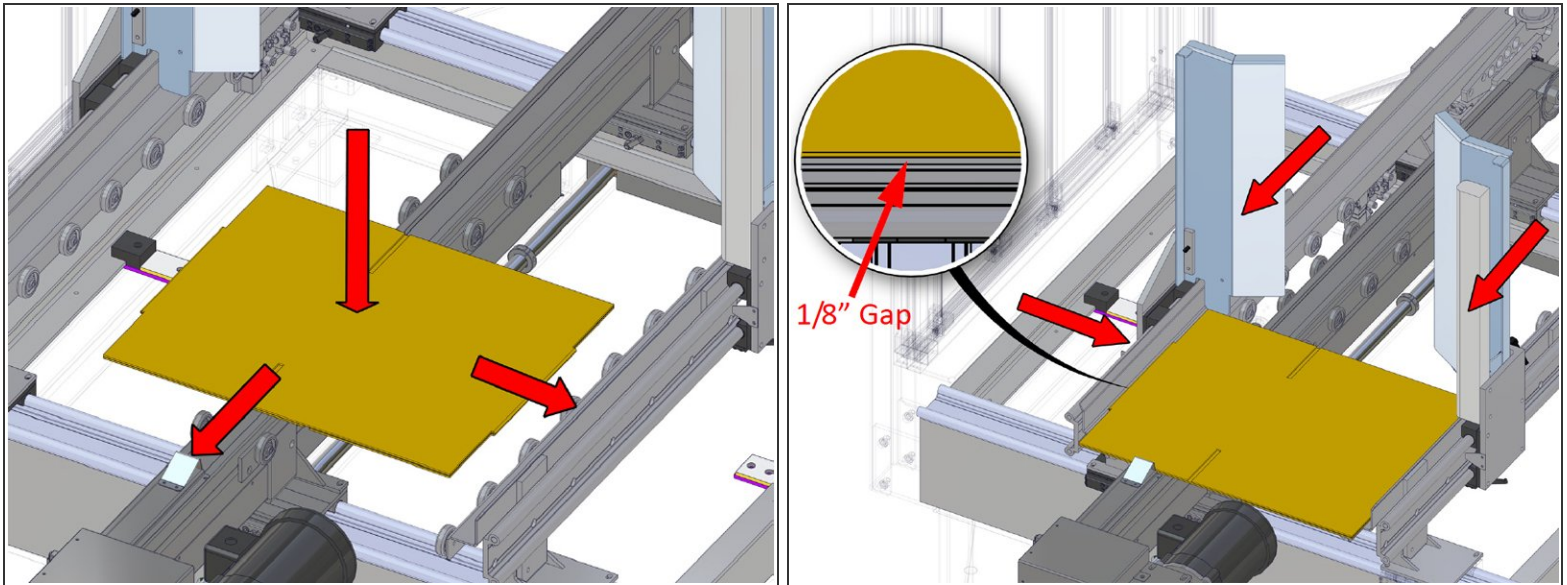
- Flattened case (1)
- Zone Setup Table (1)

## Step 1 — Adjust the Rapid Load Magazine (Part 1)



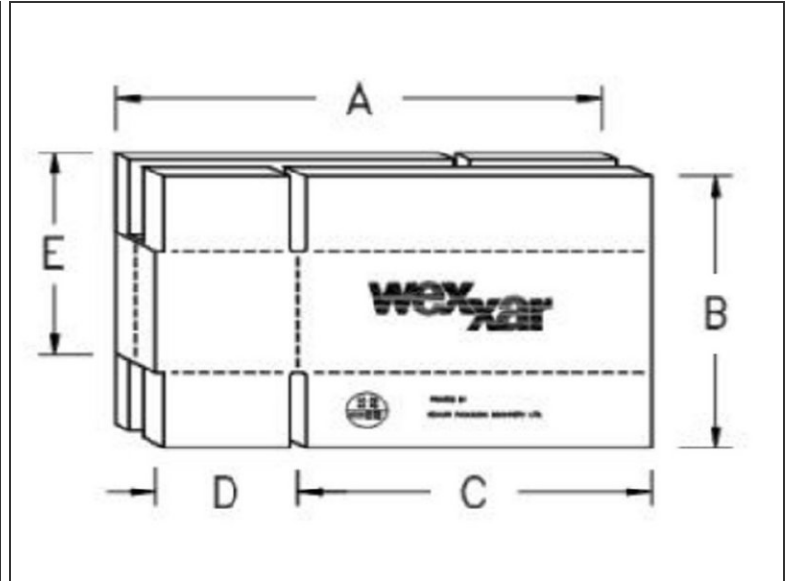
- Loosen the two black quick-adjust handles located under the left side guide and the quick-adjust handles under each back plate.
- Slide the side guide all the way to the left.
- Push the back plates all the way forward towards the discharge end of the machine.

## Step 2 — Adjust the Rapid Load Magazine (Part 2)



- Place a case blank in the loading area. Lay it flat and make sure that the bottom of the case is pointing towards the discharge end of the machine. The manufacturing joint should be face down, pointing towards the floor. Push the case against the infeed case stop and the right guide.
- Slide the left side guide towards the case blank until there is a 1/8" gap between the guide and the case edge. Slide the back plates up against the case blank. Retighten the quick-adjust handles for the left case guide and the back plates.

### Step 3 — Measure the case



- Using a flattened case, measure dimensions **B**, **D**, **C**, and **F**.